



# PTV1 WEIGHING AND LABELING PROGRAM

FOR DETAILED INFORMATION ABOUT  
THE PROGRAM AND TO REQUEST A  
LICENSE



[info@peykan.com.tr](mailto:info@peykan.com.tr)



[www.peykan.com.tr](http://www.peykan.com.tr)



+90 224 256 07 39

# Contents

Contents .....	2
About the Program.....	3
Working Screen .....	4
File.....	6
Settings.....	8
File Settings.....	9
Scale Port Settings .....	11
Communication Settings .....	13
General Settings .....	14
Communication Settings .....	15
Custom .....	17
Report Settings .....	19
Definitions.....	20
Definition.....	21
Tare Definitions .....	22
Stock Item Code Definition .....	23
Tagging .....	25
Report.....	28
PROGRAM LICENSE GENERATION REQUEST .....	29

## About the Program

PTV1 is a program that can obtain weighing data by connecting to digital indicators, print barcoded labels with this data and offers reporting capabilities. In this way, businesses enhance customer satisfaction through accurate measurement and labeling of products while optimizing their production processes.

Weighing data can be obtained and analyses can be performed with detailed reports.

The PTV1 program can adapt to a wide range of sectors:

- Textile Sector: Control and management of fabric weights.
- Food and Beverage Sector: Weight measurements of food products and printing of appropriate labels.
  - Automotive Industry: Determination and monitoring of the weights of vehicle parts.
  - Packaging Sector: Weight measurements of packaging materials and correct labeling.
- Furniture Industry: Determining and managing the weights of furniture components.
- Tire and Rubber Industry: Performing and monitoring weight measurements of rubber products.

PTV1 helps companies operating in these sectors to make their production processes efficient, ensure accurate and reliable information flow, and take production quality one step further.

### **KEY FEATURES Receiving Data from Digital Indicator:**

PTV1 integrates real-time and accurate weighing data from your digital indicator into the program. This function allows users to manage their measurement processes quickly and reliably, thereby increasing efficiency. and the margin of error is minimized. Barcoded Label Output:

The program facilitates product tracking and inventory control by printing weighing data on barcoded labels. The information on the label can be modified according to user settings.

**Customizable Record Titles:** Users can customize the titles on the tagging pages to fit their needs, allowing them to integrate the program into their own business processes.

**Company and Product Information:** Each label includes company information, product details, and net kg data, offering customers accurate and reliable information.

**Net Kg Calculation with Tare Definitions:** Users can easily calculate net kg data using the defined tare values. Thus, correct weight information is provided on the labels.

**Reporting System:** A report is kept on the dispatched labels; this allows data related to weighing operations and the use of barcoded labels to contribute to analysis and evaluation processes.

**Data Accuracy and Reliability:** By eliminating errors caused by handwritten labels, products ensures it is labeled and reported correctly.

## Working Screen



program is structured under 5 main headings. The features collected under these headings will be explained in detail and, in brief, they can be defined as follows:

### File

This is the area where you can get information about the program and our company, and where you can perform version upgrades and license purchase operations.

## Settings

This is an area where many important settings related to hardware communication and tagging are made.

## Definitions

This is an area where you can make definitions related to barcodes, tare weight, and other data that will appear on your labels, designed to facilitate the use of the program.

## Tagging

This is the area where you can print a barcode weighing label.

## Report

This is the area where you can report the weighing data you obtained with your tag.

## Status bar



Furthermore, thanks to the status bar that can be viewed on each form, you can access a wealth of information. This information includes, respectively,

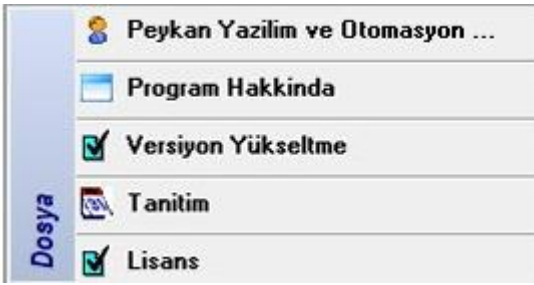
1. Database Indicates which database you are working on.
2. Scale Connection It indicates which port your scale indicator is connected to and whether the connection exists. If it is shown in red, there is no connection. If it is shown in green, it means you have a connection.
3. Printer Your connected printer and connection type are shown in this field.
4. Label Printing Type Labels can be printed in two different ways on the program: DOS and Windows. You can see which one is selected here.
5. Label Printing Language Our program can print barcodes in two languages: EPL and ZPL. You can choose ZPL for Zebra barcode printers and EPL for Argox and Godex barcode printers.

6. Product No. The product number is a counter that automatically increases with each new registration. If you only purchase labels without registering, this counter remains fixed. This allows you to actively see the quantity of production you have registered.

## Help

You can access the user manual, which provides information about that page and general usage, through the help buttons located on each form of the program. If you cannot find an answer to your question in the user manual, please do not hesitate to contact us.

## File



## Peykan Software, Automation and Electronics



This is the area where you can access information such as our company's address, phone, fax, web URL, and email address.

## About the Program



Opens the page containing the program's version information and legal license details. This screen allows you to check the program's current version and operating system information.

**Version Upgrade** From here you can check the current page of your program. If you are using an older version you can connect via the cloud and install the latest version of the program on your computer.

## Introduction

You can find our company's address and contact information on Google Maps.

## License



You can check your license status in the opened window. If you are using a licensed version, it will show your license and activation code. You can visit our website to get detailed information about our projects and company through the window.

If you wish to contact us via remote connection from the support section, you can access the AnyDesk program.

## Settings



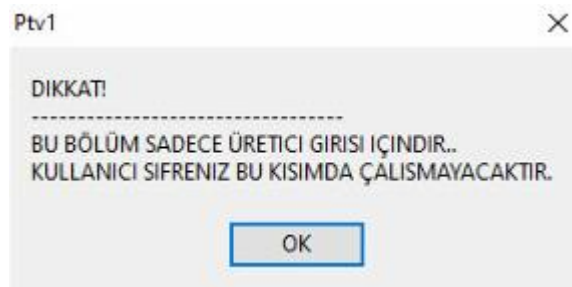
The settings section is divided into three main headings. The features collected under these headings will be explained in detail. To put it briefly,

1. **File Settings** File settings is the section where you edit the main headings that will be displayed on the label and in your reports.
2. **Weighing Port** This is the section where the settings for Tartı communication and data reception are configured.
3. **General Settings** This is the section where barcode printer communication settings, label design settings, weight format settings, and report settings are configured.

## File Settings



When you click on the "Type Information" button, the warning panel in the image below will appear on the screen.



Since the area to be entered forms the foundation of the records to be made in the program, a special password is given to the company officials, and only authorized persons are allowed to enter this area. The authorized person must enter their password in the area shown in the image below using their special password.



After entering the correct password, the Domain Name settings page will open.



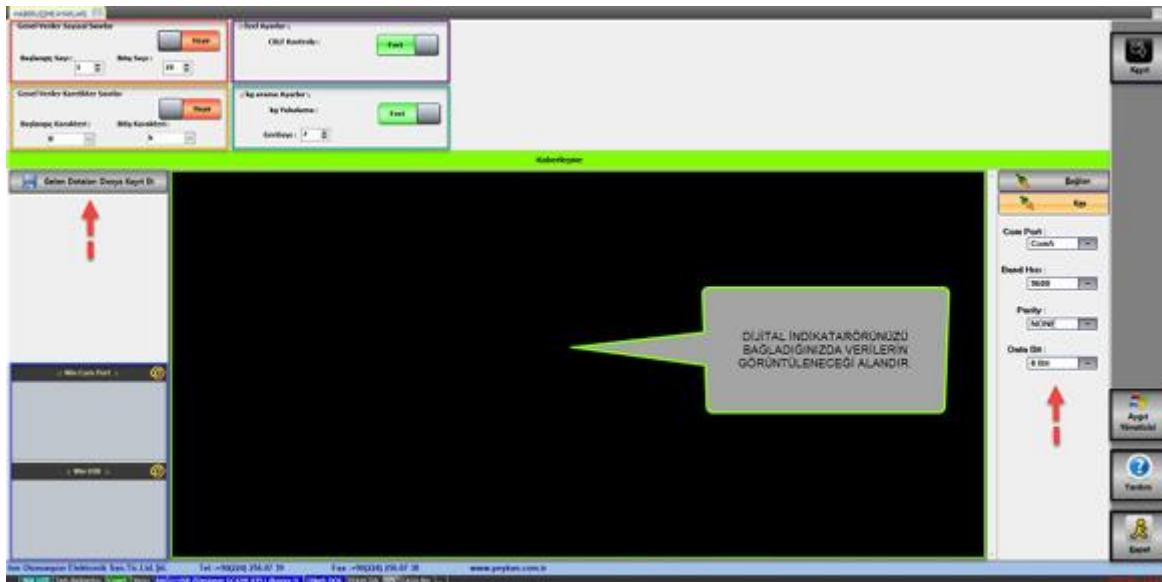
The section enclosed in the green frame specifies the main headings that will be used within the program. The area marked with the yellow frame determines which table in the database will store the selected headings.

**NOTE** = These settings should be made immediately after program installation. Any subsequent changes may cause adverse effects on the system.

## Scale Port Settings

The necessary adjustments are being made to capture the weight information coming from the weighing device into the system and to use it within the program. The basic usage will be explained step by step below.

When the page opens, the screen in the bottom image will greet you.



## Weight Finding Methods



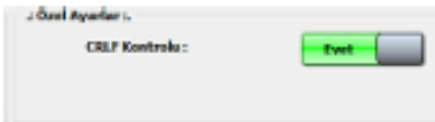
We can obtain the 4 different crushing methods from the data coming from the weighing device.

## Setting Numerical Limits on General Data



The start and end values of the known numerical index within the incoming data are entered and saved by clicking the save button. The data within the entered range is displayed in the black area on the screen. To activate this feature, set the button to the "Yes" state.

## CRLF Check



This is a helpful feature. It prevents consecutive data from being written side by side and ensures it is printed on a new line. To activate this feature, you need to set the button to "Yes" and click the record button.

## Setting Character Limits on General Data



The known start and end characters containing the weight data are identified from the incoming data. The data between the identified two characters is displayed in the black area. To activate this feature, set the button to "Yes" and press the record button.

## Catching kg



For this feature to be active, the button must be set to "Yes" and the save button must be clicked. When this feature is active, the system searches for the text "kg" within the incoming data and accesses the weight data by going backward a specified number of steps through the incoming data.

Warning: If characteristics 1, 3, and 4 mentioned above are used together, they will produce incorrect results. Use only one of the weight capture methods. Do not forget to save after each setting change.

## Communication Settings

• Bağlantı noktaları (COM ve LPT)

- Bluetooth bağlantısı üzerinden Standart Seri (COM4)
- Bluetooth bağlantısı üzerinden Standart Seri (COM5)
- Bluetooth bağlantısı üzerinden Standart Seri (COM7)
- Bluetooth bağlantısı üzerinden Standart Seri (COM8)
- Prolific USB-to-Serial Comm Port (COM2)

The program must be informed which port of the computer the digital indicator is connected to.

To find out which port your scale is connected to, click the Device Manager button and view the existing ports in the PORTS (COM & LPT) field.



**Com Port:** The name of the port connecting the weighing device to the computer.

**Baud Rate:** Also known as baudrate, this value determines the communication speed.

**Data Bit:** This is the part where data is transmitted. The default value is 8 bits.

**Parity:** This is a setting used to check for errors in data transmission.

**Even:** The total number of "1" bits in the 9 bits, including parity, is ensured to be even. This setting supports data transmissions that have an even number of "1" bits for error checking.

**Odd:** The total number of "1" bits in the 9 bits, including parity, is ensured to be odd.

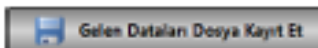
**Mark:** Parity is always set to "1". No error checking is performed, and this setting is suitable for devices that always require "1" parity.

**Space:** Parity is always set to "0". No error checking is performed, and it is used in devices that always require "0" parity.

**None:** Parity is not used. No error checking is performed during data transmission. It can be preferred in applications where error checking is not required.

To obtain weight information from the digital indicator connected to the computer, the port information it is connected to, the baud rate it uses, parity, and the number of data bits must be entered. To test whether the connection is correct, click the "Connect" button.

## Page Other Features



On the current page, you can view your available ports via WIN COM PORT and WIN USB PORT. At the same time, On the current page, you can view your available ports via WIN COM PORT and WIN USB PORT. At the same time,

## General Settings



General Settings are organized under 3 main headings.

**Communication Settings** This is the section where you can configure the connection of the barcode printer you will use and the path where you will print the labels.

**Special Settings** Weighing settings such as tare, weight format settings and printing settings are adjusted from here.

**Report Settings** Label design settings and report settings are organized in this section.

### Communication Settings

**Barcode Printer Port** To integrate your existing barcode printer into the program, you must first select your printer from the box next to the "Barcode Printer Port" text. After this selection, you need to choose the connection you use to connect your printer.

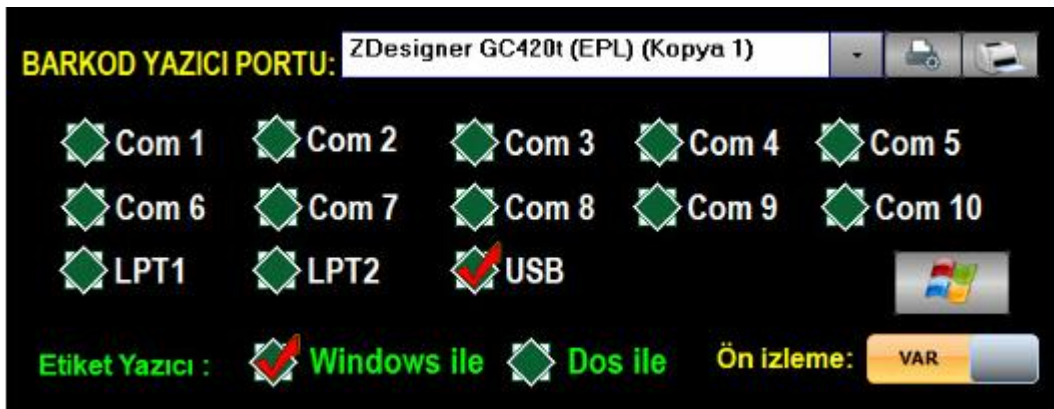


You can view the COM and LPT ports in the Device Manager, which opens when you press the button.

If you want to use this printer as your default printer, you can set it as default by clicking the printer button next to your printer name.

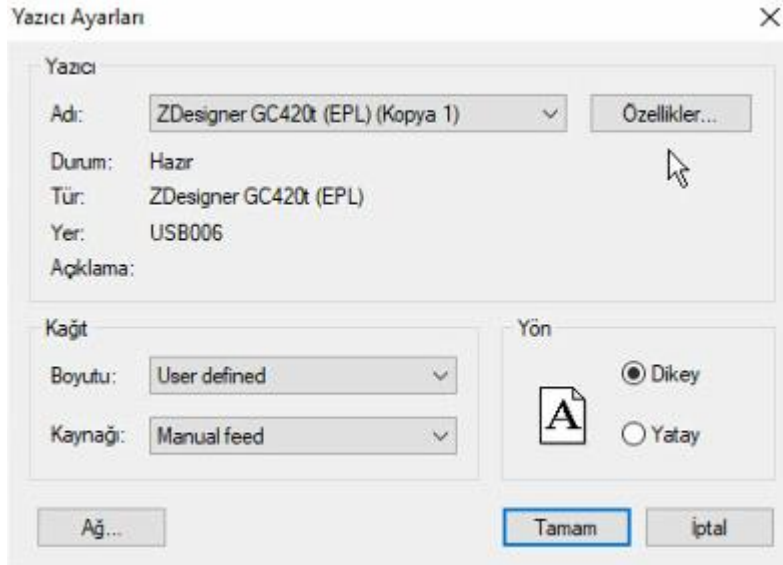
After completing the settings, do not forget to save.

### Label Printing Type



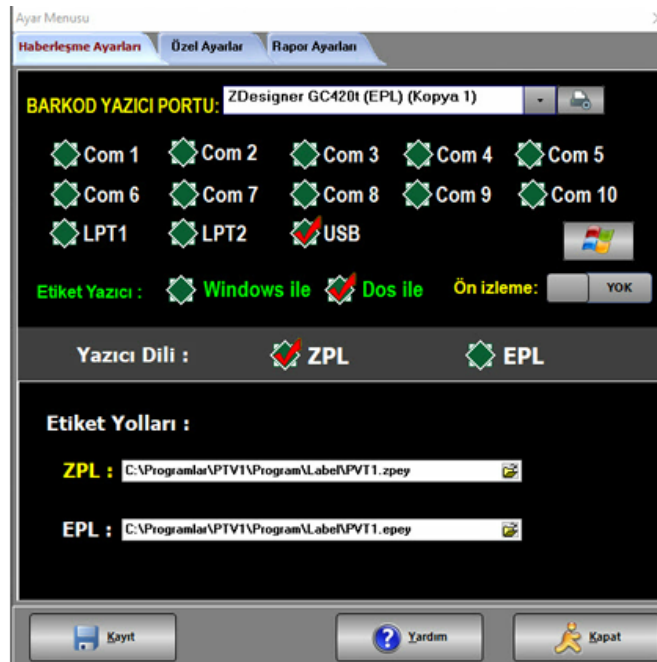
If this is your selected print setting, you won't be able to make special label selections, and settings you can change within the program like darkness, left, and top start will not be active.

Printing with Windows only uses your printer's current settings. To change these settings, you can click the printer button and modify your printing settings in the properties section of the window that opens.



Windows label printing has a PREVIEW feature. This allows you to view your label before printing. If you do not want to use this feature, set the button to "None" and save the settings.

## Printing with DOS



When printing labels with Dos, you can select the printing language and the label file to be printed. In this respect, it allows you to use customized labels. The selected printer language varies depending on the label model you use. While both ZPL and EPL languages can be used on Zebra model printers; Argox, Only the EPL language can be used on Godex model printers. Your settings such as darkness, left and top start, which you can change from within the program, are actively applied to the label. However, the preview option is not active for the DOS label, so it cannot be used.

## Custom

This is the section where important adjustments related to both weighing and labeling are made.



Weight calculation. Tare calculation is an adjustment you use when you want to find the net weight by subtracting the tare weights you have recorded from the gross weight. If you do not want to use tare calculation, you can press the RECORD button after setting the adjacent button to NONE. When tare calculation is not available, the tare weight on the label will appear as 0 kg.

#### Automatic registration

When automatic recording is active, each tag you press is saved to the system. However, if you press a wrong tag and then press it again, you might see extra products in your reports.

If you set the automatic recording feature to OFF, the printed labels are not automatically saved to the system; you must press the Save button manually on the labeling page.

Manual Weight Entry Our program allows you to print labels by receiving data from a digital indicator, and it also takes precautions against any connection interruption you might experience. If you experience any problems with your digital indicator or connection cables, you can activate this feature and enter weights manually from the labeling page to prevent disruptions in production processes.

Weight Format The weight format determines the appearance of the weight that will be displayed on your labels and reports.

Label Settings These are label settings that you can edit when running with DOS.

To determine the printer's print speed, you need to change the SPEED setting. While increasing the Speed accelerates the ink flow, it is recommended to use the Speed at a lower setting to obtain higher quality print labels.

To determine the print quality, you need to change the DARKNESS setting. Increasing the darkness allows you to get better quality prints, but we advise you to change this setting carefully, considering your printer model.

While some printers only accept a maximum darkness value of 15, others can go up to 30. Increasing the darkness beyond your printer's capacity can burn your ribbon and cause technical malfunctions in the printer.

To set the starting point settings of the label, the X Y START settings are used. The X setting refers to the left starting point, and if you want your label to shift slightly to the right, you need to increase this value.

The y setting expresses the starting point and if you want your label to shift down a little, you need to increase this value.

The number of barcodes printed indicates how many labels will be printed in one print job. You can change this setting if you want to print more than one of the same label in each print job.

The printing is divided into two types: with and without ribbon. If you are using a ribbon, and you are not using a thermal ribbon, you must select the DIRECT THERMAL printing type here.

Your last sticker record can be backed up by our program if the FINAL STICKER RECORD setting is active. This also facilitates intervention if you experience a problem with the sticker.

## Report Settings

**Label Print Settings** This is the field where you can determine the positions of the domain names you specify on the label. You can delete the part you don't want to appear on the label and set its order to 0.

**Fixed Header** This is the part where you enter the information you want to appear as fixed on the label. For example, if you want your company name to always appear, you can tick the "fixed" button, enter the information, and then save and use it. If you are using the demo version, you cannot use this setting.

**Report Settings** On the reporting page, the position of the document to be printed on paper is determined by the Header (Title) and Footer (Page Break).

The report type and whether a preview of the document to be printed will be shown are also determined. Direct printing cannot be done on a wide report. You can choose A4 or A5 according to the paper type you will print on. The Top, Bottom, Right, Left, Header, and Subheader margins of the report to be printed are adjusted from this field. The positions determined in this field are used when the report type is selected as "wide report". In a wide report, you can filter the data according to the variable you want and get the output. However, this cannot be done in a simple report; the outputs contain all the data.

## Definitions



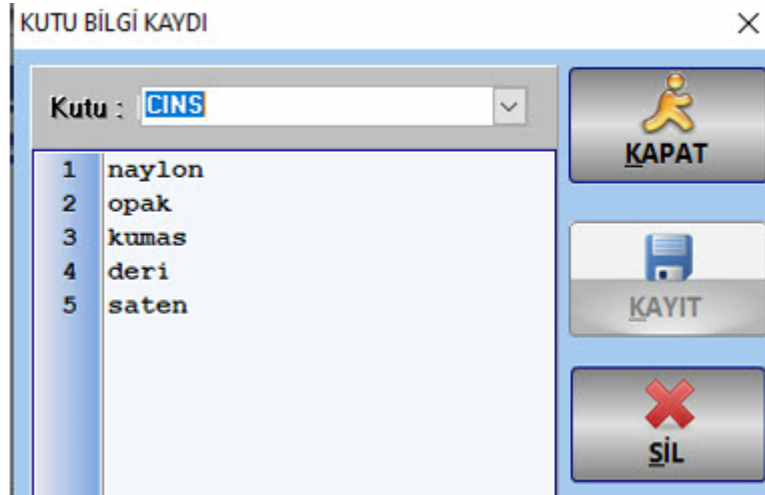
The definitions are divided into three main headings. These features will be explained in detail on the relevant pages.

In Definitions Sub-data entries are made for the headings specified on the file settings page.

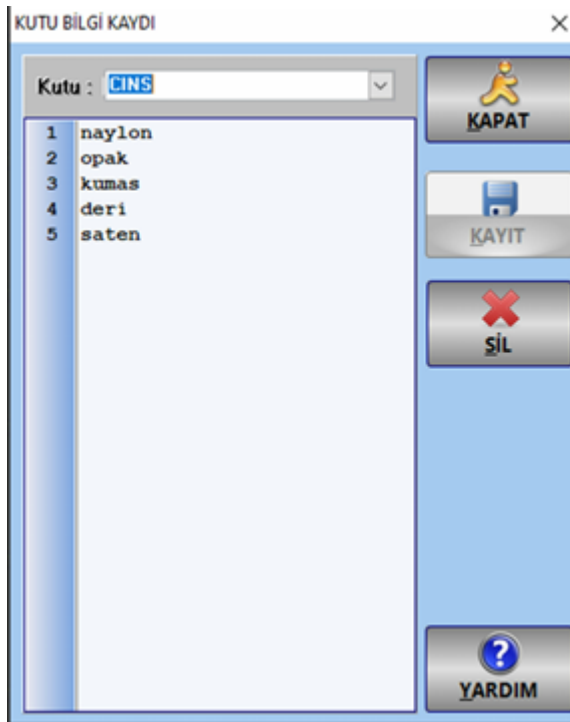
In tare definition, coil and package tares are recorded in the system.

In the Stock Code Definition Codes are assigned to products defined in the definitions.

## Definition



The operation of adding sub-elements belonging to the headings specified on the file settings page is performed from this window. Click on the heading to which you want to add a sub-element. Records previously added to the heading are displayed in the lower area.



New members can be added or old ones can be deleted. To introduce the changes made to the system, you can click the save button to complete the process.

This process is designed to save you time by preventing you from re-entering the data you constantly use during label printing.

**CINS :**  ▼

- nylon
- opak
- kumas
- deri
- saten

## Tare Definitions

**DARA TANIMLARI**

Bobin Darası    Paketleme Darası

Adı	Dara (gr.)
KUTU	555
CUVAL	666
KASA	9000

Adı:                

Dara:  Gr.

In the above tare definition page, the tares of the coils and packages are determined. When the determined tares are selected on the Labeling page, the net weight is found by subtracting them from the gross weight.

To select whether the operation is to be performed on the coil tare or the packaging tare, click on the desired option in the buttons above the list.

Adı :

Dara :

The coil or package name is entered and the specified weight is written in grams (e.g., 90 g). It is saved to the system by clicking the Record button. To

delete a saved tare, select the record you want to delete from the list above and click the Delete button.

**DARA TANIMLARI**

Bobin Darası    Paketleme Darası

Adı	Dara (gr.)
30x20 BOBIN	500
40x30 BOBIN	600
25x15 BOBIN	50
50x 80 BOBIN	1000

Adı :

Dara :  Gr.

Similar to packaging tare adjustment, coil tare adjustment can also be performed here. You can enter new data in the Name and Tare sections and delete old and incorrect records using the Delete button. Press the SAVE button for the data you want to save.

## Stock Item Code Definition

Tanımlı Ürün Sayısı : 6

CSV    Yardım    Kapat

**Kayıtlı Stok Kodu Dosyası**

Stok Barkod	İplik Cinsi	İd
211007175349	satem	5
211007175421	opkk	6
32354141	ghjgh	7
455674554	ssss	8
787867556	zxczxc	9
123323123	asdasd	10

**YENİ KAYIT**

Stok Barkod :

Ürün Cinsi :

**KAYIT SİL**

Stok Barkod :

Kayıt Sayısı :

Stock codes for the products recorded in the definitions area are determined. The determined codes are printed on the label when the label is removed.

Kayıtlı Stok Kodu Dosyası		
Stok Barkod	İplik Cinsi	Id
2334121	deri	2
210505083934	kumas	4
456724631	sss	10
132423421	bbb	12
456753123	ddd	13
2105070859	abc	16

The registered stock codes are displayed in the upper list.

**YENİ KAYIT**

Stok Barkod :


Urun Cinsi

If a stock barcode for the defined product type is to be assigned, the product type is selected from the drop-down list. The stock barcode field located directly above it is filled with the designated stock barcode, which must contain a maximum of 12 characters and only numbers. If the product name is not defined, click the green arrow button to be directed to the definitions window, complete the registration process, and then perform the barcode introduction operation.

**KAYIT SİL**

Stok Barkod :



Kayıt Sayısı:

When a previously defined stock code is to be deleted, the barcode to be deleted is selected from the list. The information corresponding to the selected barcode is displayed below, and the deletion operation is performed with the delete button.

## Excel Record



Instead of saving product types and stock codes held in the Excel spreadsheet one by one, all records in the table are added to the database at once. Click the CSV button, navigate to the desired Excel file path and select the file. The records in the selected csv file will be listed in the table within the program. If the incoming data is to be recorded, the record button in the upper area should be clicked.

## Tagging



The labeling page is displayed in the image above. After entering product information, tare information, and weighing information, you can optionally print only the barcode or register only in the system.

If the automatic recording feature in Special Settings is turned on, the information you print will be saved to the system. Therefore, you do not need to press the record button again.

All

<b>Müsteri Adi :</b>	Firma3	▼	←
<b>Urun Cinsi :</b>	dwq	▼	←
<b>Renk No :</b>	R113	▼	←
<b>Lot No :</b>	123451	▼	←
<b>Bobin Adet :</b>	3	▼	←
<b>Bukum :</b>	24	▼	←
<b>Fason Firma :</b>	DENEMEF	▼	←

information pertaining to the product must be entered. If the desired data is not recorded, you can open the registration window by clicking on the green buttons next to the boxes.

**Dara Ağırlık :**

<b>Bobin :</b>	SS	▼	55	Kg.	<b>Sayısı :</b>	1	▲▼	
<b>Paket :</b>	P1	▼	70	Kg.	<b>Dara :</b>	125.00		

After entering product information, the used coil and package must be selected. The tare allowances are taken according to the selected coil and package and subtracted from the gross amount to display the net amount. To

use the tare window, the "Tare Calculation" option must be enabled in the special settings.



The weight amount coming from the weighing device or manually entered is displayed in the gross weight field.

To manually enter weights, go to the Special Settings window and activate the manual weight entry button. If the button is active, you can open the weight entry field by double-clicking on the gross weight section.



## Report

When you click the "report" button, you will see the page in the bottom image. This page displays the weighings for the current day.



Musteri Adı	Urun Cinsi	Renk No	Lot No	Balenin Adedi	Balenin Ağırlığı	Fatura Fiyatı	Bütç	Günc	Net Top	Tarih	Total	Kart No
Musa2	Mer	8112	12345	2	24	20000	140.30	140.00	22.30	07.09.2021	12.30.13	2
Musa2	Mer	8112	12345	2	24	20000	120.30	120.00	32.30	07.09.2021	12.40.03	4
Musa2	Mer	8112	12345	2	24	20000	200.30	200.00	9.00	07.09.2021	12.40.03	8
Musa2	Mer	8112	12345	2	24	20000	400.30	400.00	300.00	07.09.2021	12.40.03	4
Musa2	Mer	8112	12345	2	24	20000	60.30	60.00	20.00	06.09.2021	13.21.27	2
Musa2	Mer	8112	12345	2	24	20000	80.30	80.00	70.00	06.09.2021	13.14.23	8
Musa2	Mer	8112	12345	2	24	20000	120.30	120.00	50.00	07.09.2021	13.00.18	8
Musa2	Mer	8112	12345	2	24	20000	50.30	50.00	100.00	07.09.2021	13.00.18	8

In the adjacent image, the Discussion reports between the specified two dates can be viewed.



With the buttons in the side picture, you can access the operations performed during the day or all operations.

Başlangıç Tarihi : 06.09.2021  
Bitiş Tarihi : 07.09.2021

TARİH ARALIĞI

### Gruplandırma

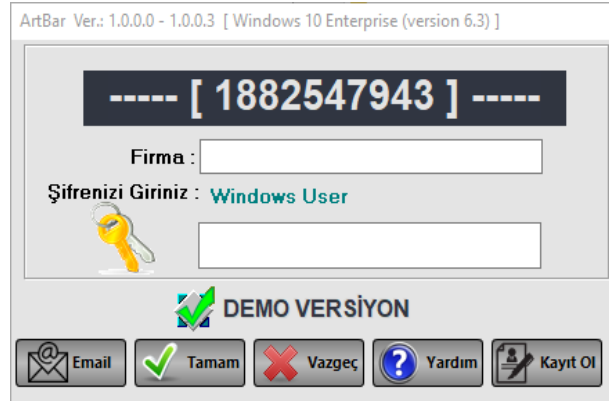
- Müsteri Adı
- Urun Cinsi
- Renk No

In the image on the right, there is a multiple grouping option to easily access the desired data in reports containing a lot of information. It is

enough to click on the header you want to group.

## PROGRAM LICENSE GENERATION REQUEST

When the art program is first opened, it runs as a Demo Version. To use the full version of the program, the registration process is initiated by selecting the “Sign Up” option on the main screen.



When the “Register” button is clicked, the Activation Code Request screen opens. This screen displays the user's first name-last name, email, phone, company information, along with a code generated by the system specifically for the computer. After filling in the required fields, the application is submitted.

After the forwarded license request is reviewed, a unique activation code is generated and shared with the relevant user. Licensing is completed when the activation code is entered.

**Aktivasyon Kodu İsteği**

Ad Soyad: \*

E-posta: \*

Telefon: \*

Bilgisayar :

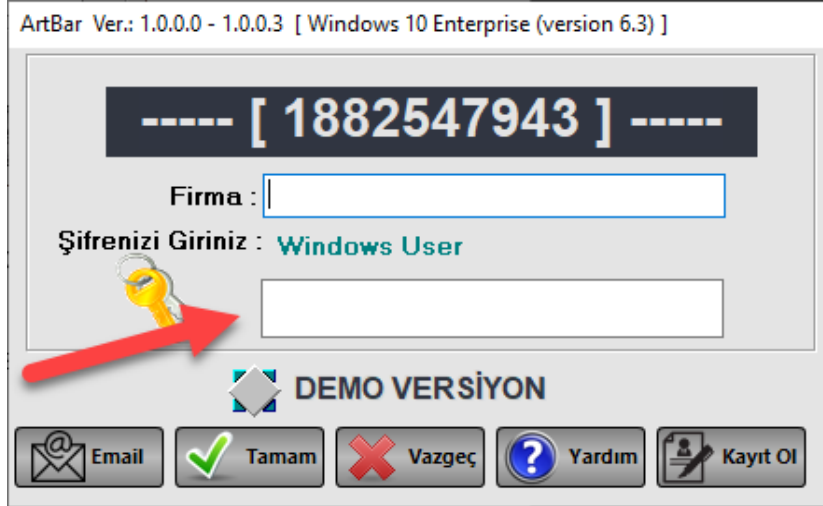
Firma : \*

Program : \*

Versiyon : \*

Kod : \*

**Gönder**



- 1) Enter the company name on the opened screen.
- 2) Enter the license code in the area indicated by the red arrow
- 3) Uncheck the demo version box.
- 4) Click the OK button.
- 5) Start using the program in a licensed manner.

