



# **PTV1 WEIGHING AND LABELING PROGRAM**

FOR DETAILED INFORMATION ABOUT  
THE PROGRAM AND TO REQUEST A  
LICENSE



[info@peykan.com.tr](mailto:info@peykan.com.tr)



[www.peykan.com.tr](http://www.peykan.com.tr)



+90 224 256 07 39

# Contents

Contents .....	2
PROGRAM'S AREAS OF USE AND FUNCTIONS .....	3
Program's Areas of Use .....	3
Program Functions and Highlighted Features .....	4
WHEN YOU START USING THE PROGRAM .....	5
File Settings .....	5
Weighing Port .....	6
General Settings .....	6
Communication Settings .....	6
Custom Settings .....	8
Report Settings .....	9
Definitions .....	9
Grade Definitions .....	10
Stock Item Code Description .....	12
Tagging .....	13
Report .....	14
PROGRAM LICENSE GENERATION REQUEST .....	15

# PROGRAM'S AREAS OF USE AND FUNCTIONS

## Program's Areas of Use

PTV1 is a program that can connect to digital indicators to obtain weighing data, print barcode labels with this data, and offers reporting capabilities. This enables businesses to optimize their production processes while enhancing customer satisfaction through accurate measurement and labeling of products.

Weighing data can be obtained and detailed reports and analyses can be made.

The PTV1 program can adapt to a wide range of industries:

- Textile Industry: Control and management of fabric weights.
- Food and Beverage Industry: Weight measurements of food products and printing of appropriate labels.
- Automotive Industry: Determining and monitoring the weights of vehicle parts.
- Packaging Industry: Weight measurements of packaging materials and correct labeling.
- Furniture Industry: Determining and managing the weights of furniture components.
- Tire and Rubber Industry: Performing and monitoring weight measurements of rubber products.

PTV1 helps companies operating in these sectors to make their production processes efficient, ensure accurate and reliable information flow, and take production quality a step further.

## Program Functions and Highlighted Features

**Receiving Data from Digital Indicator:** PTV1 integrates real-time and accurate weighing data from your digital indicator into the program. This function allows users to manage their measurement processes quickly and reliably, thereby increasing efficiency and minimizing error margins.

**Barcoded Label Output:** The program facilitates product tracking and inventory control by printing weighing data on barcoded labels. The information on the label can be changed according to user settings.

**Customizable Record Titles:** Users can customize the titles on the tagging pages to fit their specific needs, enabling them to integrate the program into their own business processes.

**Company and Product Information:** Each label includes company details, product details, and net kg data, offering customers accurate and reliable information.

**Net Kg Calculation with Tare Definitions:** Users can easily calculate net kg data using the tare definitions entered, ensuring accurate weight information on labels.

**Reporting System:** A report is kept on the labels issued; this allows data related to weighing operations and the use of barcoded labels to contribute to analysis and evaluation processes.

**Data Accuracy and Reliability:** By eliminating errors caused by handwritten labels, it ensures that products are labeled and reported accurately.

## WHEN YOU START USING THE PROGRAM



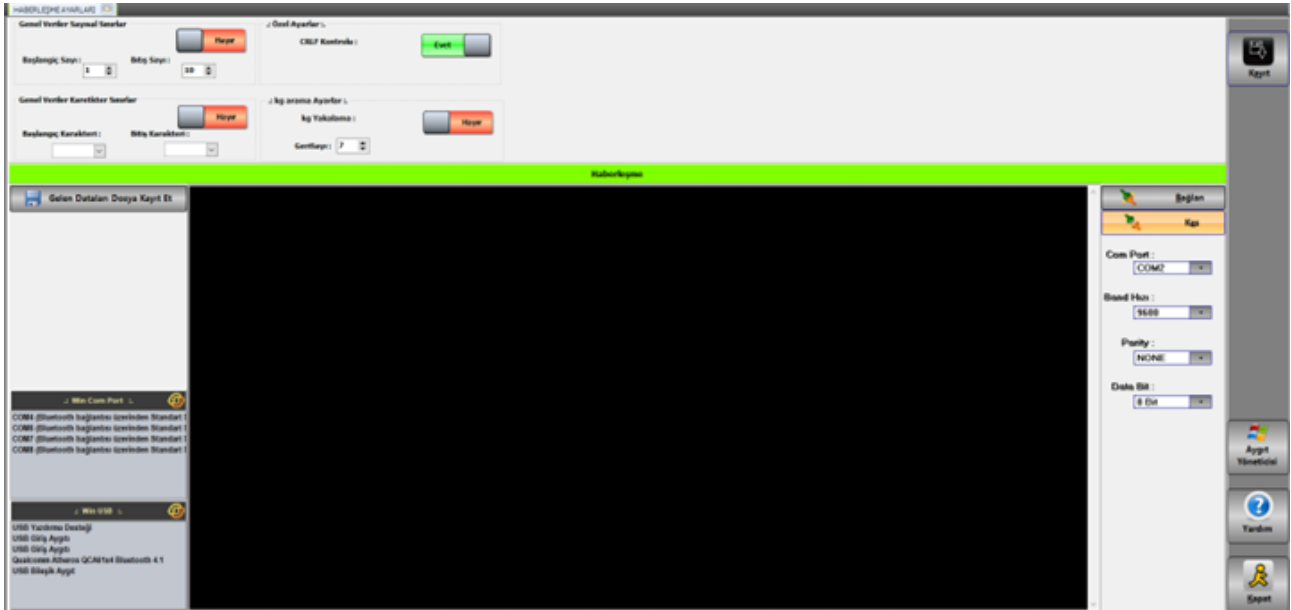
Before you start using the program, you need to ensure hardware integration and configure settings that will make it easier for you to use, such as definitions. To briefly touch on these settings,

### File Settings

On this page, you can edit the titles that will appear on the labeling page and on your barcoded label.



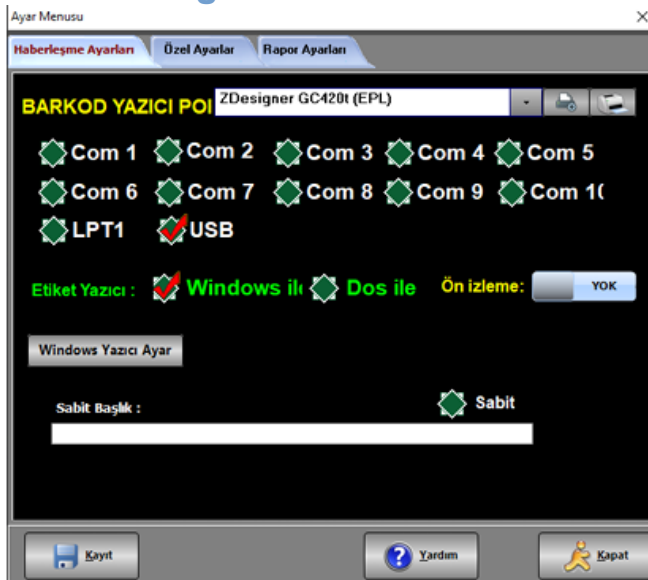
## Weighing Port



You can save the port to which the digital indicator you have connected through this page will be connected and the data reception settings.

## General Settings

### Communication Settings



**Barcode Printer Port:** The port to which the barcode printer is connected is selected here. The program supports COM1–COM10, LPT1, and USB connections. In the image, the USB connection is active.

**Barcode Printer Model:** The barcode printer model used in the upper section (e.g., ZDesigner GC420t – EPL) is selected.

**Label Printer Selection:** The printing method of the label printer is determined.

**Via Windows:** Printing is done through the Windows operating system using the installed printer driver.

**With DOS:** Printing is done by sending commands directly to the printer without needing a driver.

**Preview:** Sets whether the label output is displayed on the screen before printing.

**Windows Printer Settings:** Provides quick access to the Windows printer settings for the selected printer.

**Fixed Header:** This is the field where the header information that will appear fixed on the labels is defined.

**Control Buttons:** The settings made are saved with the Save button, support information is accessed with the Help button, and the menu is exited with the Close button.

## Custom Settings

Whether to use tare, whether the record during label printing will be automatic or manual, the use of manual weight entry, weight format setting, and the top position or boldness settings of the label are adjusted from this page. The program can print labels both thermally and directly thermally. If you print with a ribbon, you should use "**THERMAL**"; if you print without a ribbon, you should use "**DIRECT THERMAL**".



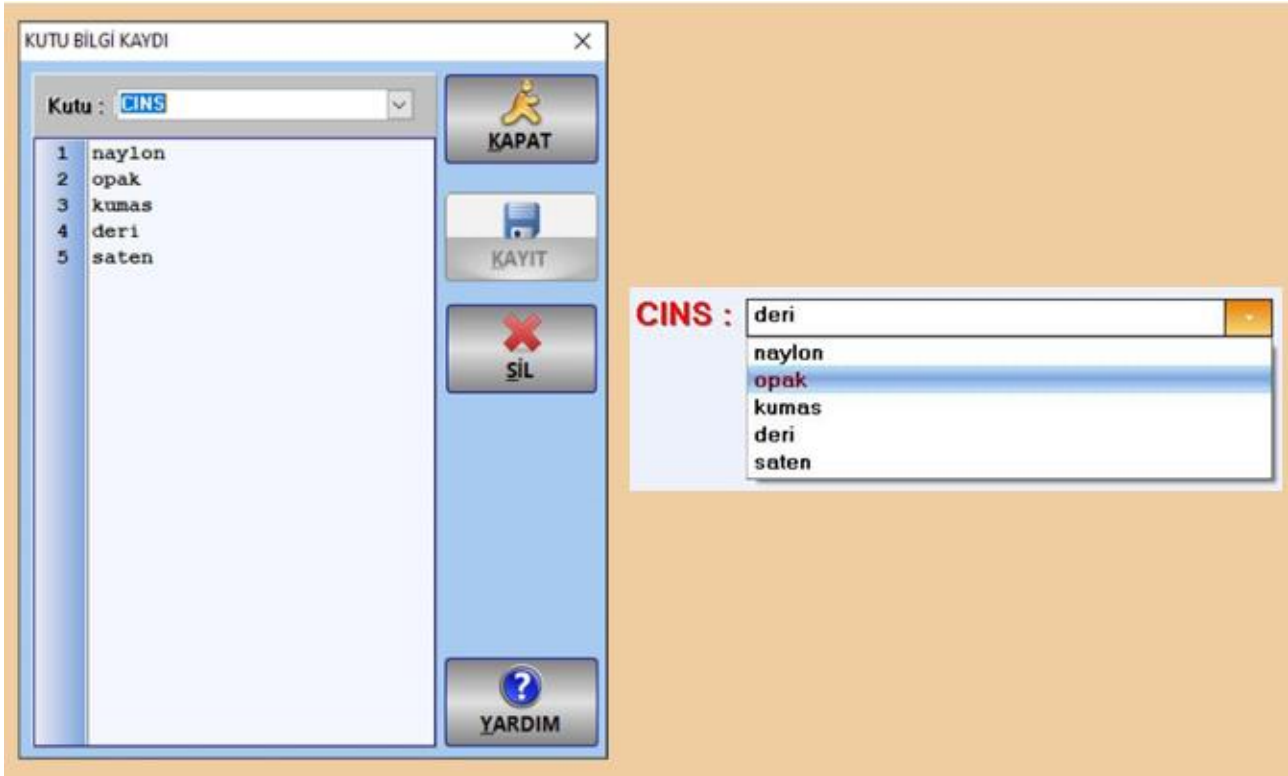
## Report Settings

You can see the order in which your pre-defined field titles will appear on the label from the label output settings. This feature allows you to print fully customized labels bearing your company name.

You can also use dual-style reports and change the location settings you see above in the wide report.

## Definitions

This is the field where you will enter information under the field titles you define. Making these definitions prevents errors and saves time during labeling by reducing manual data entry.



As you can see in the photo above, the data added under the TYPE field is automatically sorted under the TYPE heading on the tagging page.

### **Grade Definitions**

Pre-defining the tara (tare) weights, which is one of the main features of the program, is crucial for enabling the automatic calculation function.

**DARA TANIMLARI**

**Bobin Darasi**    **Paketleme Darasi**

Adi	Dara (gr.)
30x20 BOBIN	500
40X30 BOBIN	600
25x15 BOBIN	50
50x 80 BOBIN	1000

Adı :

Dara :  Gr.

Tare adjustment can be done in two different types: coil and packaging. Its main functionality can be understood from the following photo on the labeling page.

As you can see, this pre-defined tare was selected, automatically deducted from the gross weight, and the net weight was calculated.

<b>BRUT AĞIRLIK</b> <b>25.00</b> <small>KG.</small>	<b>DARA</b> <b>0.72</b> <small>KG.</small>	<b>NET AĞIRLIK</b> <b>24.28</b> <small>KG.</small>
---	--	--

## Stock Item Code Description

Tanımlı Ürün Sayısı : 3

CSV Yardım Kapat



### Kayıtlı Stok Kodu Dosyası

Stok Barkod	İplik Cinsi	Id
211007175349	satın	5
241011103748	kumas	11
241011103753	deri	12

### YENİ KAYIT



Stok Barkod :

CINS

### KAYIT SİL

Stok Barkod :

Kayıt Sayısı : **3**

This is a page where you can assign a unique barcode to each product type.

- It ensures traceability and tracking of products. Additionally, with the Excel import feature that allows you to transfer all stock codes simultaneously, you can view your existing codes within the program without entering them one by one.

It prevents wasted time and facilitates work flow.

## Tagging

The screenshot shows a software window titled "FTC1 SART Weighing Program - Ver 1.0.0.1". The interface is divided into several sections. At the top, there are buttons for "BAKIM YAZ" and "SART (F1)", and a date/time display "23 - Ağu. 2020 - Sal 13:27:04". Below this, there are three large boxes displaying weight information: "BRUT AĞIRLIK 00.00", "DARA 0", and "NET AĞIRLIK 0.0". The "NET AĞIRLIK" value is highlighted in red. Below these boxes, there are several input fields for product information: "ÜRÜN ADI", "CİNSİ", "RENK", "PARTİ NO", "MÜSTERİ", "SİPARİŞ NO", and "PERSONEL". To the right of these fields, the "Ürün No" is displayed as "32". The bottom section of the interface is a large, empty light blue area.

This screen is used for labeling and printing barcodes along with the weighing process of the products. The gross weight obtained from the scale is automatically calculated as net weight by subtracting the defined tare information and displayed on the label.

By selecting the product name, type, color, batch number, customer, order number, and personnel information, unique product-specific barcodes are generated. The labels can be printed directly without registration or can be processed by recording the transaction in the system.

Each recorded labeling operation is stored along with product and weighing information, providing reliable data for traceability, tracking, and reporting needs.

# Report

Dışın No	Barkod	ÜRÜN	CİNS	RENK	NO	PERSONEL	Büt	Dava	Net Kg	Tarih	Saat
3 02 00071703460	Fena7	İsten	R.130		122462	3	64.00	3.00	68.95	7.10.2024	17:00:08
4 02 00071703460	Fena7	İsten	R.130		122462	3	64.00	3.00	68.95	7.10.2024	17:00:09
5 02 00071703460	Fena7	İsten	R.130		122462	3	65.00	3.00	68.95	7.10.2024	17:00:10
6 02 00071703460	Fena7	İsten	R.130		122462	3	65.00	3.00	63.95	7.10.2024	17:00:11
7 02 00071703460	Fena7	İsten	R.130		122462	3	65.00	3.00	63.95	7.10.2024	17:00:12
8 02 00071703460	Fena7	İsten	R.130		122462	3	71.00	3.00	73.95	8.10.2024	08:40:09
9 02 00071703460	Fena7	İsten	R.130		122462	3	66.00	0.00	66.00	8.10.2024	08:40:10
10 02 00071703460	Fena7	İsten	R.130		122462	3	66.00	0.00	66.00	8.10.2024	08:40:11
11 02 00071703460	Fena7	İsten	R.130		122462	3	66.00	0.00	66.00	8.10.2024	08:40:12
12 02 00071703460	Fena7	İsten	R.130		122462	3	66.00	0.00	66.00	8.10.2024	08:40:13
13 02 00071703460	Fena7	İsten	R.130		122462	3	66.00	0.00	66.00	8.10.2024	08:40:14
14 02 00071703460	Fena7	İsten	R.130		122462	3	67.00	0.00	63.95	8.10.2024	08:40:15
15 02 00071703460	Fena7	İsten	R.130		122462	3	66.00	0.00	66.95	8.10.2024	08:40:16
16 02 00071703460	Fena7	İsten	R.130		122462	3	66.00	1.00	63.90	8.10.2024	13:00:24
17 02 00071703460	Fena7	İsten	R.130		122462	3	66.00	1.00	63.90	8.10.2024	08:07:40
18 02 00071703460	Fena7	İsten	R.130		122462	3	71.00	1.00	75.90	8.10.2024	08:00:39
19 02 00071703460	Fena7	İsten	R.130		122462	3	66.00	1.00	67.90	8.10.2024	08:00:38
20 02 00071703460	Fena7	İsten	R.130		122462	3	66.00	1.00	66.90	8.10.2024	08:00:37

You can easily review your daily, weekly, or monthly data through the weighing report. You can perform an inspection on all your data or filter and inspect specific product types or customers.

You can print your weighing reports in either a simple or a comprehensive format, and you can also convert them into digital documents such as Excel, PDF, and HTML.


## PROGRAM LICENSE GENERATION REQUEST


ArtBar Ver.: 1.0.0.0 - 1.0.0.3 [ Windows 10 Enterprise (version 6.3) ]






----- [ 1882547943 ] -----

Firma :

Şifrenizi Giriniz : Windows User



 DEMO VERSİYON

 Email  Tamam  Vazgeç  Yardım  Kayıt Ol

When the art program is first opened, it runs as a Demo Version. To use the full version of the program, the registration process is initiated by selecting the “Sign Up” option on the main screen.

When the “Register” button is clicked, the Activation Code Request screen opens. This screen displays the user's first name-last name, email, phone, company information, along with a code generated by the system specifically for the computer. After filling in the required fields, the application is submitted.

After the forwarded license request is reviewed, a unique activation code is generated and shared with the relevant user. Licensing is completed when the activation code is entered.

### Aktivasyon Kodu İsteği

Ad Soyad : \*

E-posta : \*

Telefon : \*

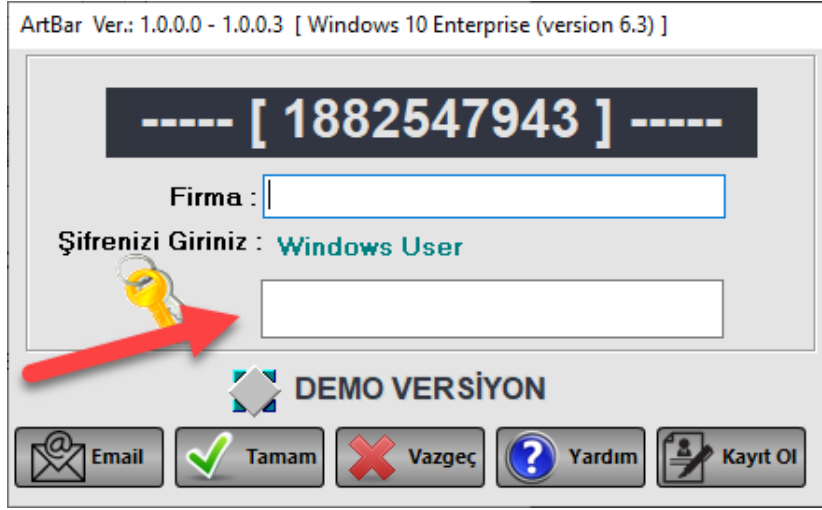
Bilgisayar :

Firma : \*

Program : \*

Versiyon : \*

Kod : \*



- 1) Enter the company name on the opened screen.
- 2) Enter the license code in the area indicated by the red arrow
- 3) Uncheck the demo version box.
- 4) Click the OK button.
- 5) Start using the program in a licensed manner.